



Please be vigilant to keep our dogs safe. Put any scraps of food or litter in the bin.

Dogs should only eat their own food and can become unwell if they eat some human foods, especially: Raisins, Grapes, Chewing Gum, Chocolate & Sweets



WHO CAN HELP ME?

The **ELSA** team on
ELSA@cps.hants.sch.uk

Or drop in during break & lunch

For more information about CAL,
please visit their website:

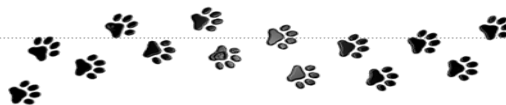
<https://www.canineassistedlearning.com/>

How to approach our school dogs!

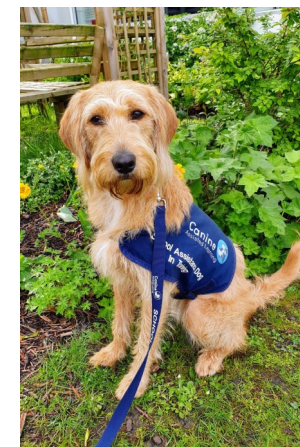
Please come say hi!
We like meeting students.

Just remember:

- Dogs don't like to be crowded and have sensitive hearing so **be calm and sensible around them.**
- Always **ask** the handler before you stroke the dog.
- The best place to stroke a dog in **on the body** (avoid their head, tail and feet).



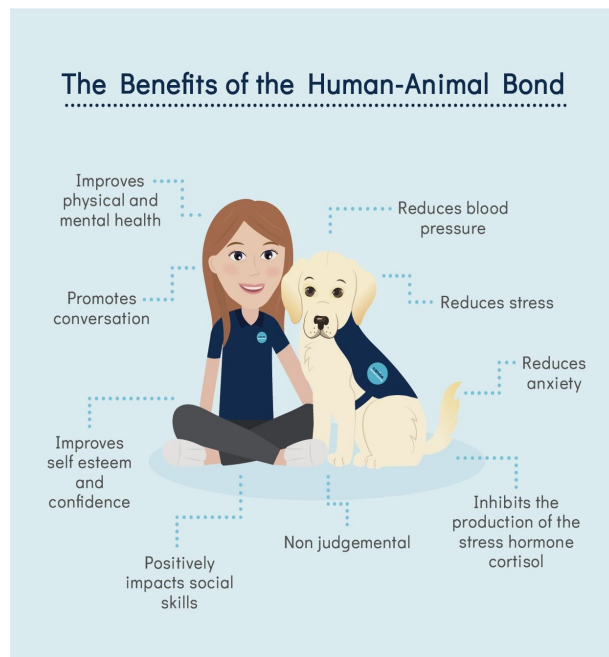
Canine Assisted Learning



Calthorpe Park School
Learners who aspire for themselves and inspire others

Overview

CAL animal assisted talking therapies offer an innovative therapeutic approach that engages young people through the development of the human animal bond. This has proved to be of huge benefit to those who struggle to engage in traditional talking therapies.

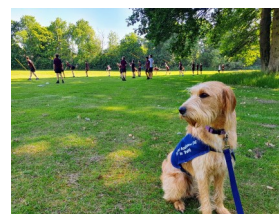


How can CAL help my child?

CAL offers a different way of exploring difficult and sensitive issues, making it easier for the young people we work with to express their feelings and recount painful experiences.

Our highly trained CAL dogs help create a calm and peaceful environment enabling our sessions to be of maximum benefit. We provide talking therapies to help with the following:

- Depression
- Anxiety
- Eating disorders
- Self harm
- Coping with change
- Working through traumatic and upsetting experiences
- Self regulation
- Bereavement



Our School Dog, Luna



Luna is in school 3 days a week and can be found in the ELSA area. She joined Calthorpe as a puppy and is currently in training to become a therapy dog. Mrs Pascoe, Ms Ball & Mrs Brant are Luna's handlers.



CAL Sessions

We also offer sessions directly from CAL. These run twice a week. The CAL practitioner, Mollie brings in one of the therapy dogs for these sessions. Students are timetabled to meet with Mollie and the dog for half an hour sessions.

